



NEW! SHIPPING NOW! NEW!



Street Operators and FEC owners **MAGIC COIN™** has arrived



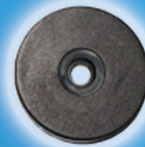
31" W x 33" D x 76" H

The Game Features

- Single Coin Mech (to the right of the player console)
- DBA Ready
- Holds 1250 prize filled Eggs (Bulk vending type items)
- Set for Winner Every Time (Can be removed)
- Set for \$1 per play
- Small Claw can hold 1 Egg
- Small prize door to retrieve the Egg that is won
- 5 prize doors below the console for larger prizes.
Each door is labeled with a number 1 thru 5.
3 Prize Boxes, Left side: 6" W x 6.5" H x 14.5" D
2 Prize Boxes, Right side: 6" W x 9.75" H x 14.5" D
- 1 Unique RFID Coin/Token Reader
- 5 Special RFID "Magic" Coins/Tokens
Each RFID token is labeled with a number that corresponds to one of the 5 prize doors



RFID Coins included



**Filled Egg
Merchandise
Not Included**

How it is played

The player inserts his currency or token. The player then plays the crane to win the egg of his/her choice. The Egg that is won is then dropped into a prize door to the left of the console.

The player opens the Egg to retrieve the bulk vending item and maybe a special RFID token.

If a special RFID coin is won, the player inserts the RFID "Magic Coin" into the special RFID coin reader. The reader will then scan the coin and automatically open/release the corresponding prize door. The player can then retrieve the prize they have won.

CRANES • REDEMPTION GAMES • SPORTS GAMES • SELF-MERCHANDISERS • AND MORE!

SMART INDUSTRIES

A LEADING COIN-OP PROVIDER SINCE 1985
1-800-553-2442 • WWW.SMARTIND.COM

07/2018