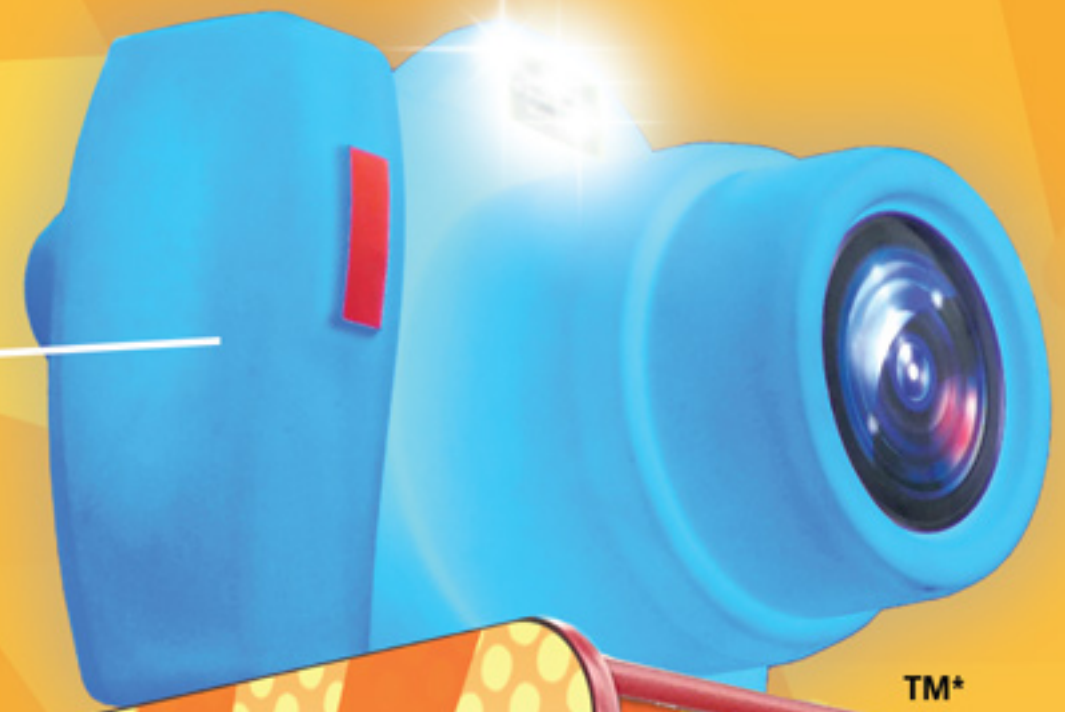




some of our innovative new features...

Attention-Grabbing, Interactive Color-Changing Camera Topper



24" HD LCD Touchscreen with Dazzling Graphics! Fun, Easy-to-Use Smartphone User Interface with Interactive Borders and Digital Stickers.

Multiple Print Formats!



TEAMPLAY
WWW.TEAMPLAYINC.COM

FUN included with every Photo!

HARDWARE FEATURES:

24" High-Definition, LCD Touchscreen
Allows for Attractive Graphics and Ease of Use

Dual, High-Capacity Dye Sublimation Printers

Wide Camera Angle Captures All the Fun

High-Resolution Camera

Attention-Grabbing, Trademark
Interactive Camera Topper
with Color-Changing Capabilities

One Bill Acceptor Standard
(Wired for 4 Currency Inputs)

Credit/Debit Card Ready

Full Metal Frame with Heavy Duty
Wheels & Leg Levelers

Greater Reliability

High-Security Locking System

Forced-Entry Feature

Industrial Grade Electronics

Full Cabinet LED Lighting

*Camera Topper is a trademark
of Team Play, Inc.

SOFTWARE FEATURES:

Smart Printing Utilizes Both Printers on Demand

Fun, Easy-to-Use Smartphone User Interface

Remote Status Updates and Reporting

Multiple Print Formats:
(2" x 6" Photo Strips, 2-Photo 4" x 3",
4-Photo 2" x 3", Single Photo 4" x 6")

Custom Borders, Logos & Advertising

User Has the Ability to Retake Photos

Multiple Print Upsell Options

Supports Social Media

Digital Stickers

English, Portuguese, and
Spanish Language Options

Designed and Built in the U.S.A.

Dimensions & Weight:

Uncrated: Weight 570 lbs.
31"W x 47"D x 80.5"H
(w/ Camera Topper 103"H)

Crated: Weight 630 lbs.
40"W x 52"D x 86.5"H



TEAM PLAY
WWW.TEAMPLAYINC.COM

201 Crossen Avenue
Elk Grove Village, IL 60007
Phone: 847-952-7533
Fax: 847-952-7534
www.teamplayinc.com
sales@teamplayinc.com